

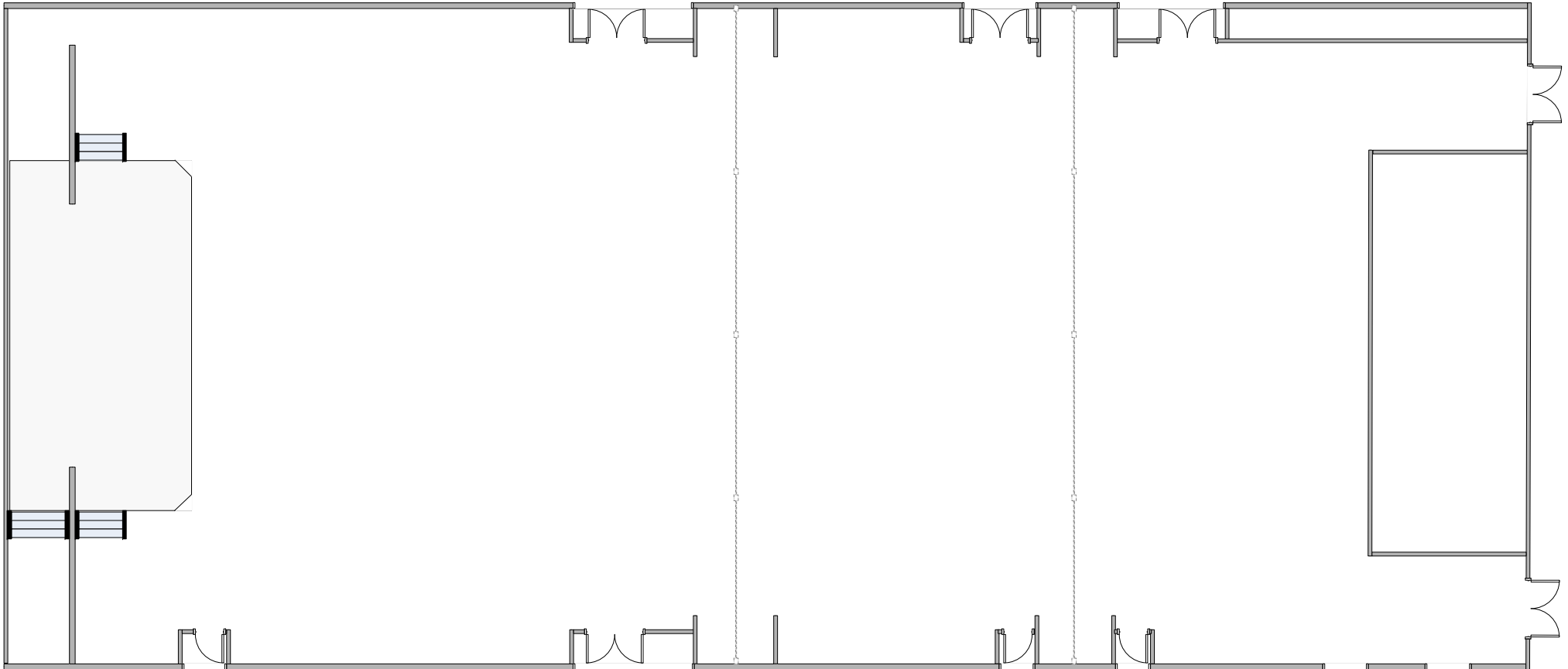
**The HUB**

**Venue Set-ups**

Front Ballroom

Mid Ballroom

Back Ballroom



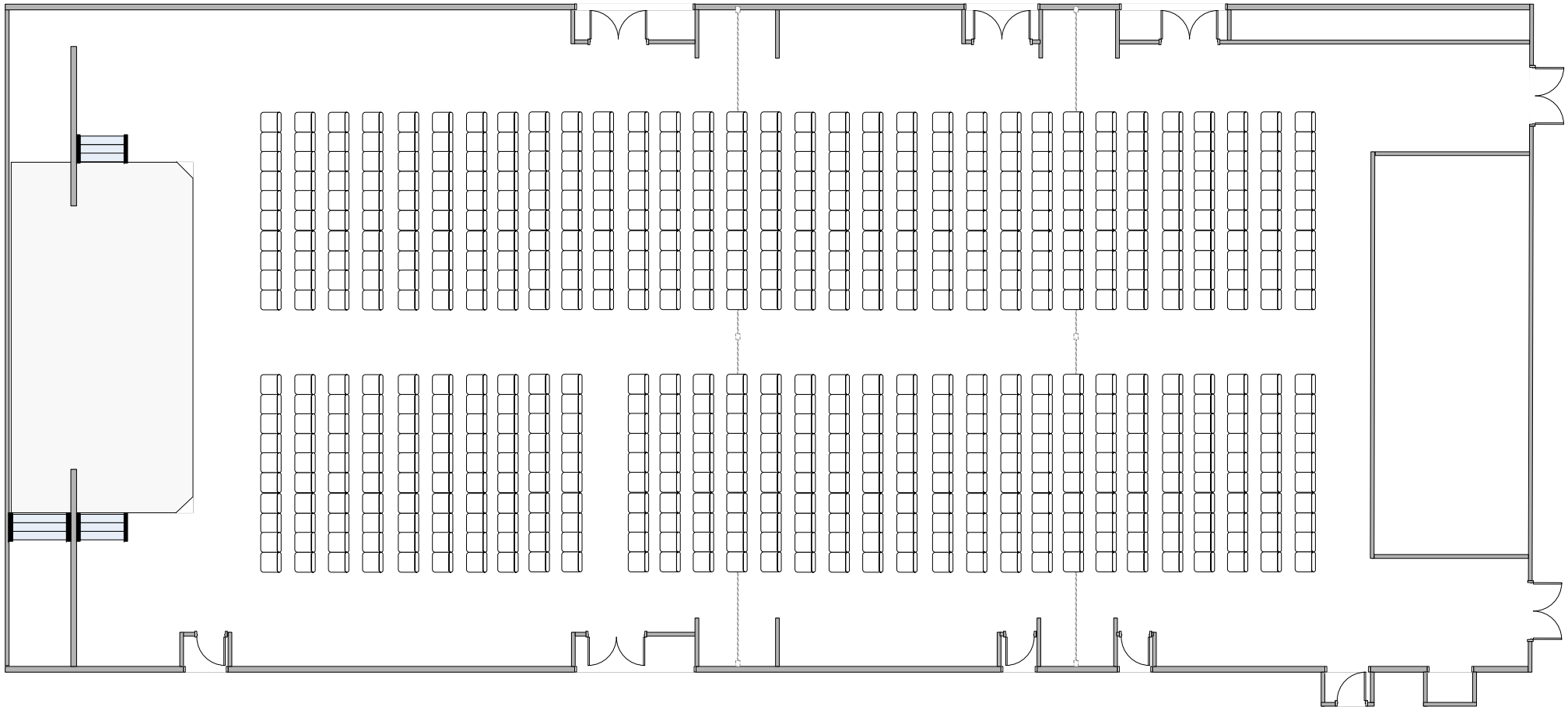
S/BK - 1:00/1:00

Hub Ballroom Open  
Standing Room for 750

Front Ballroom

Mid Ballroom

Back Ballroom



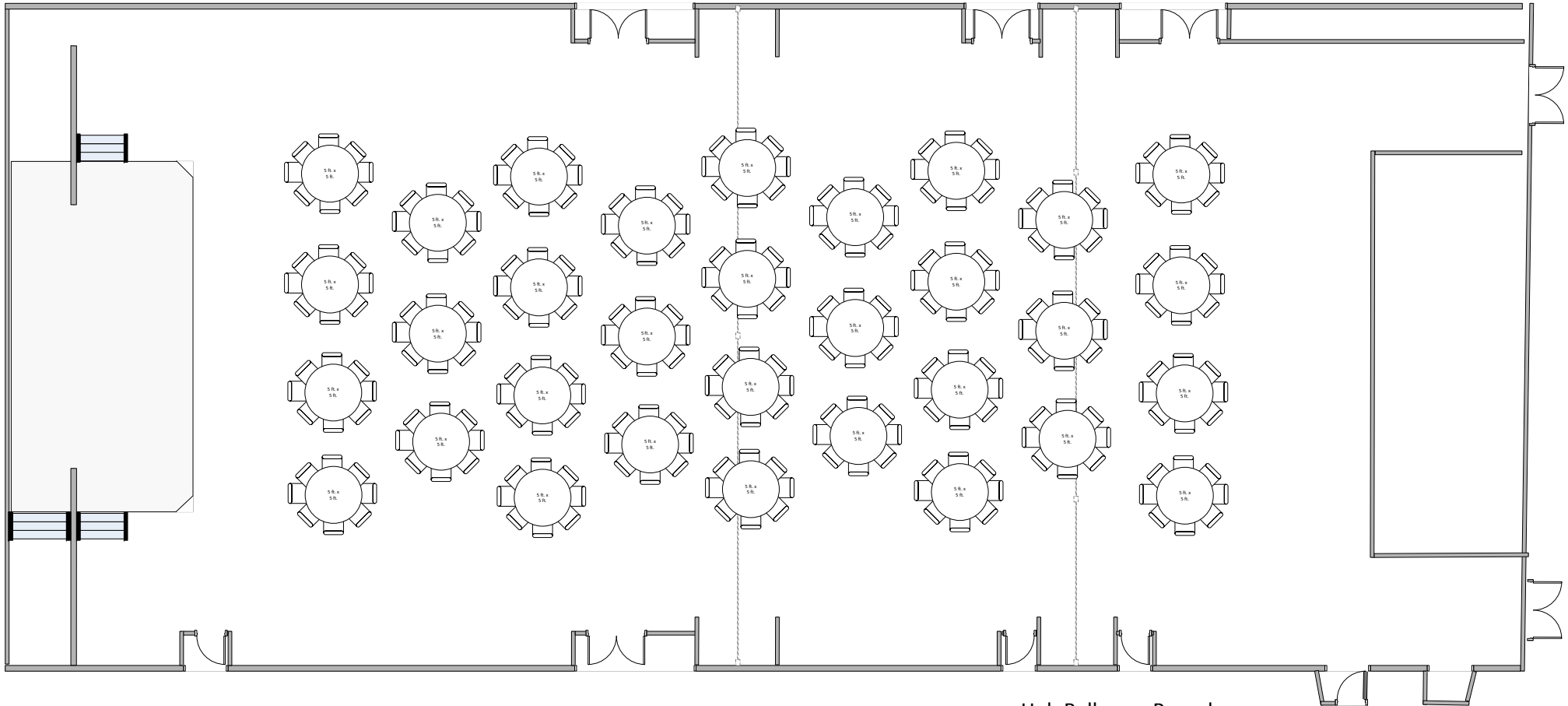
S/BK - 1:30/1:30

Hub Ballroom Theater for 630

Front Ballroom

Mid Ballroom

Back Ballroom



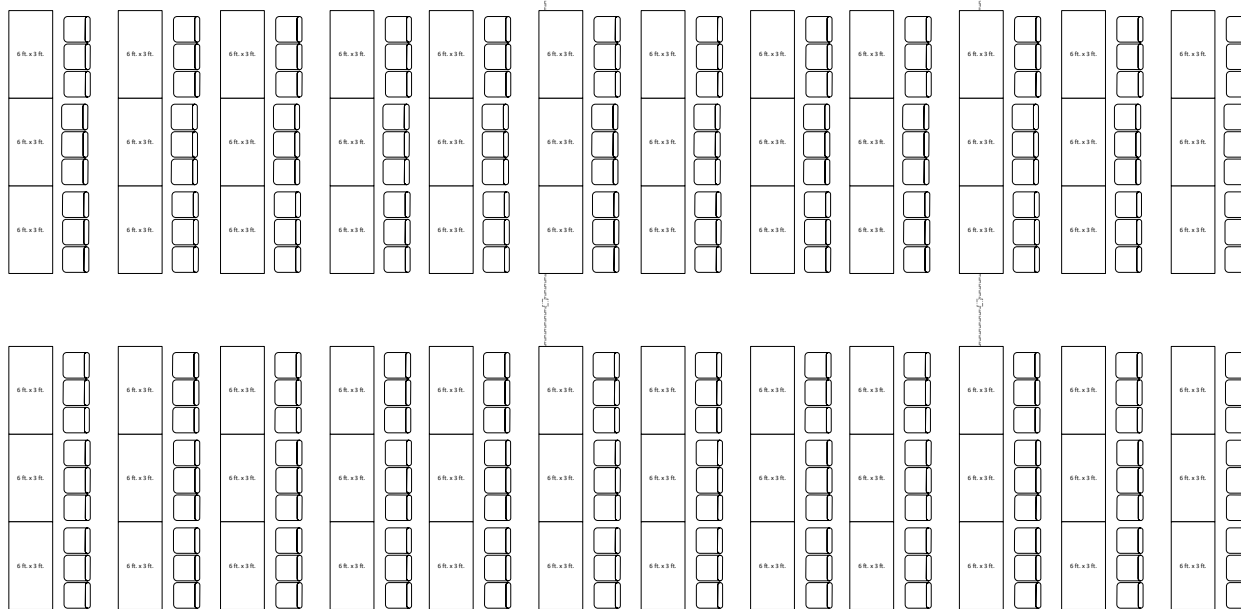
S/BK - 1:30/1:30

Hub Ballroom Rounds  
Seating for 256

Front Ballroom

Mid Ballroom

Back Ballroom



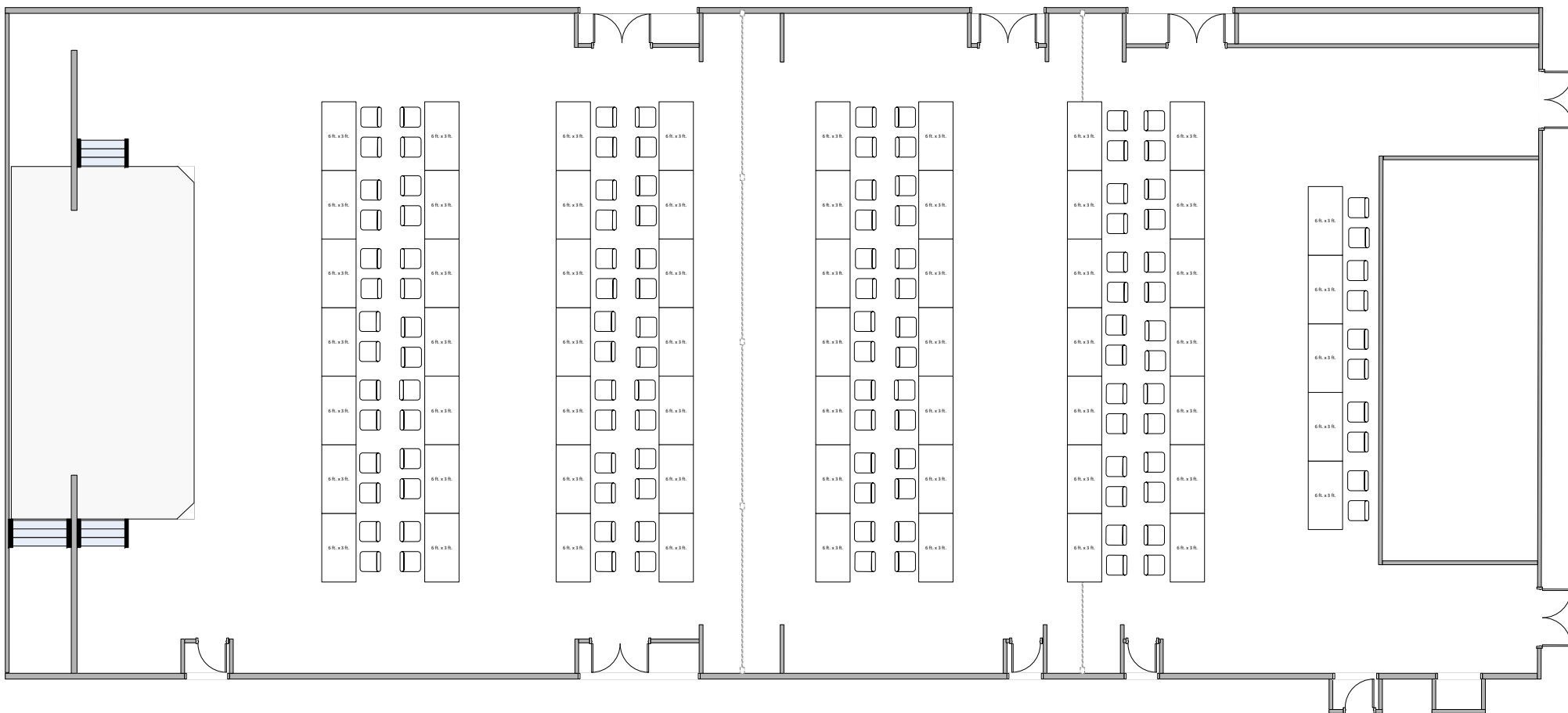
S/BK - 2:30/1:30

Hub Ballroom Classroom  
Seating for 216

Front Ballroom

Mid Ballroom

Back Ballroom



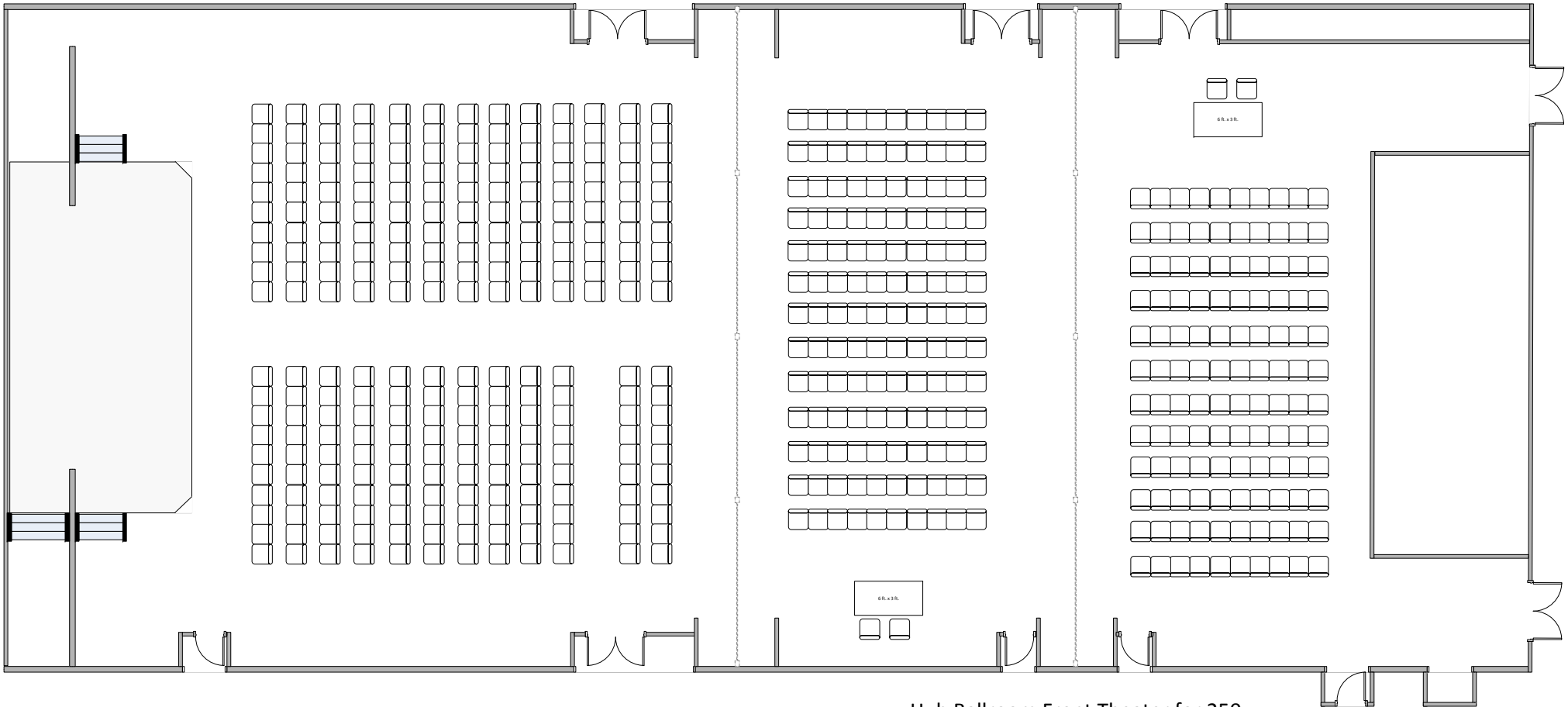
S/BK - 2:30/1:30

Hub TradeShow/Vendors  
61 Tables

Front Ballroom

Mid Ballroom

Back Ballroom



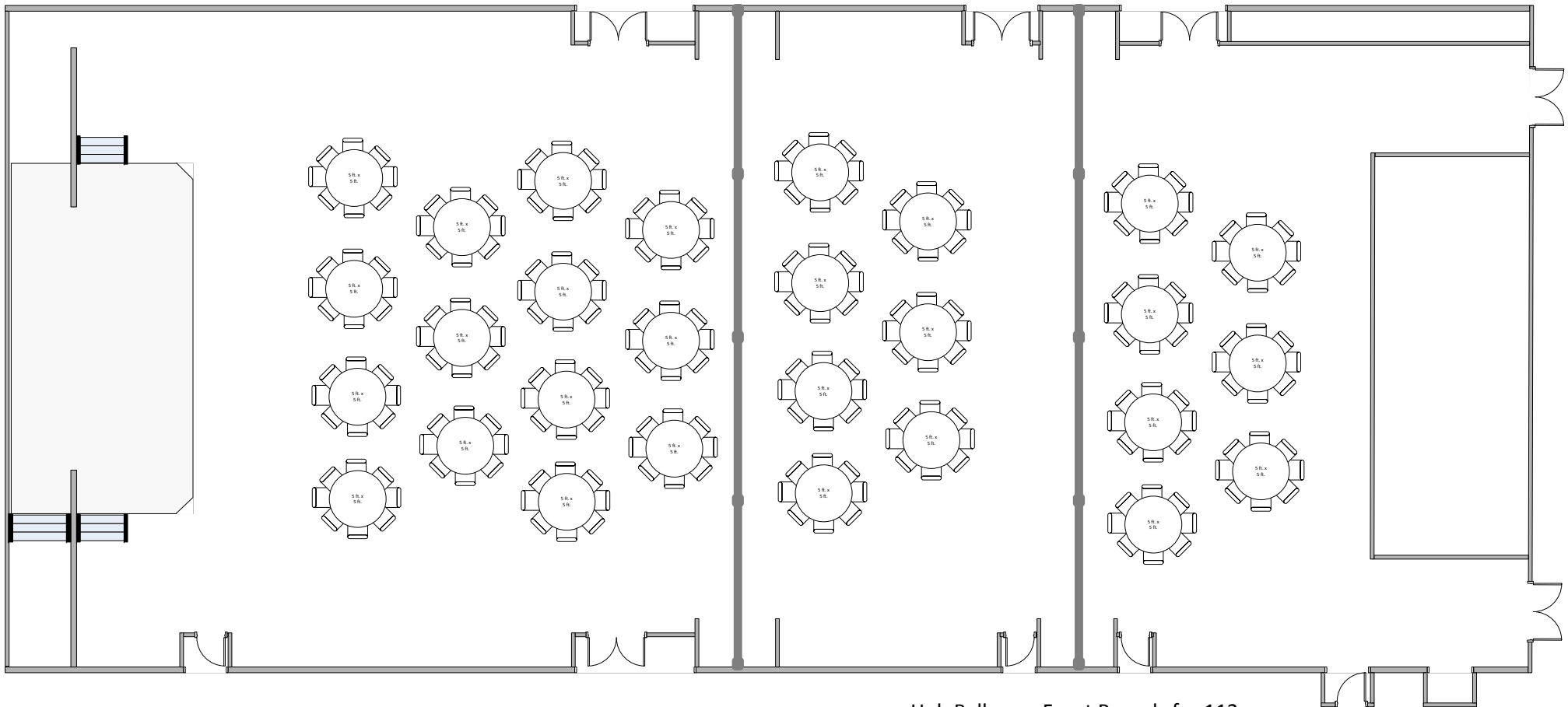
S/BK - 2:30/1:30

Hub Ballroom Front Theater for 250  
Hub Ballroom Mid Theater for 130  
Hub Ballroom Back Theater for 120

Front Ballroom

Mid Ballroom

Back Ballroom



S/BK - 2:30/1:30

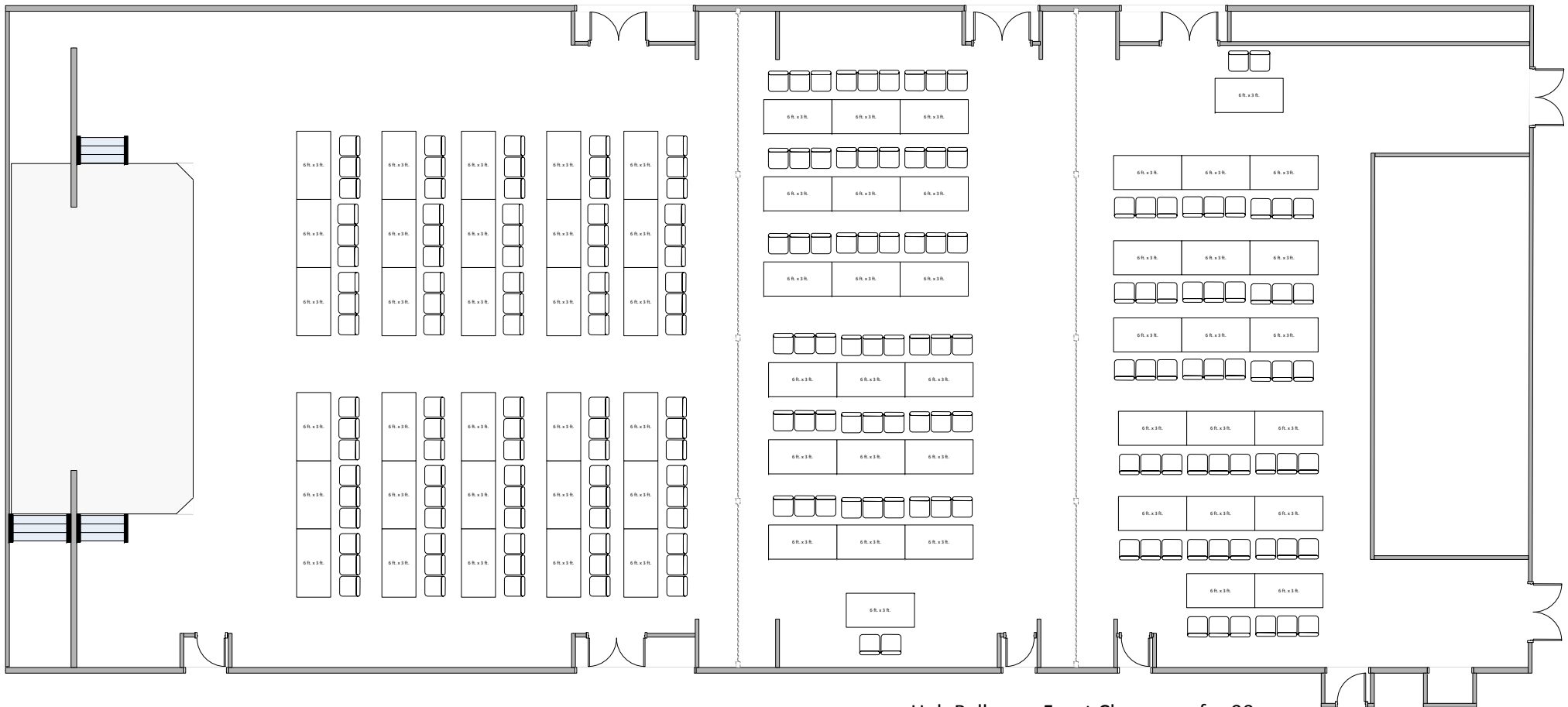
Hub Ballroom Front Rounds for 112  
Hub Ballroom Mid Rounds for 56  
Hub Ballroom Back Rounds for 56



Front Ballroom

Mid Ballroom

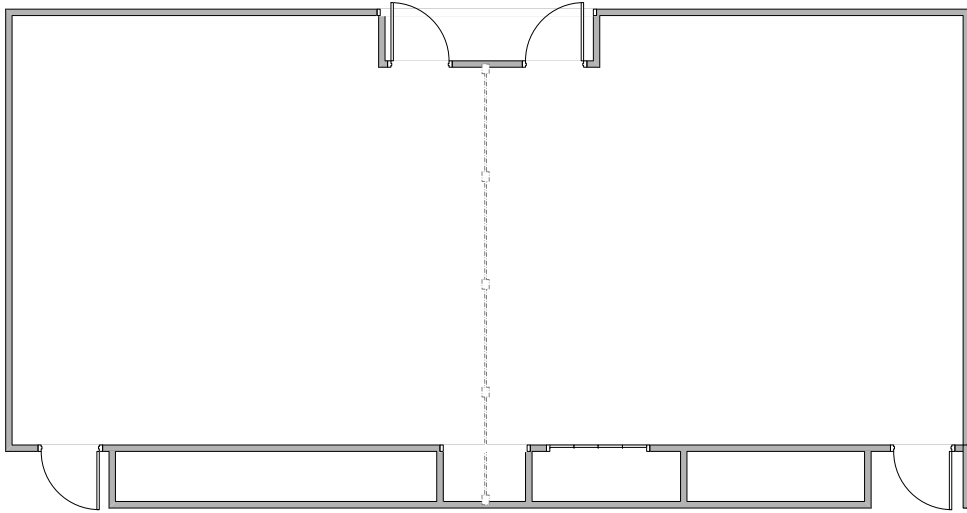
Back Ballroom



S/BK - 2:30/1:30

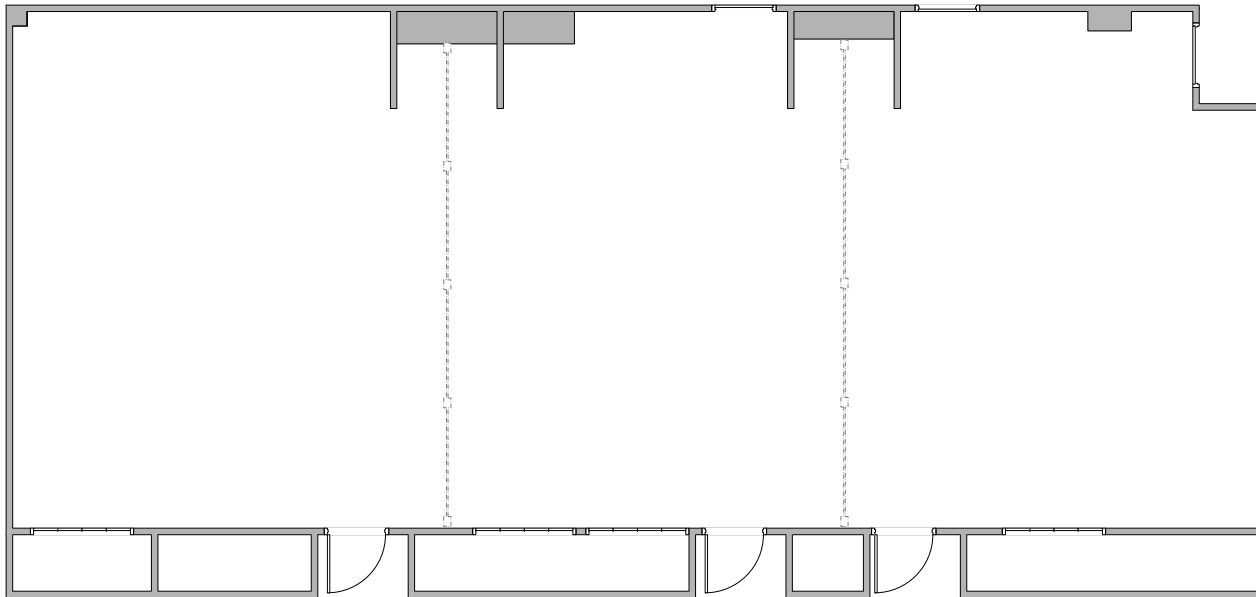
Hub Ballroom Front Classroom for 90  
Hub Ballroom Mid Classroom for 54  
Hub Ballroom Back Classroom for 51





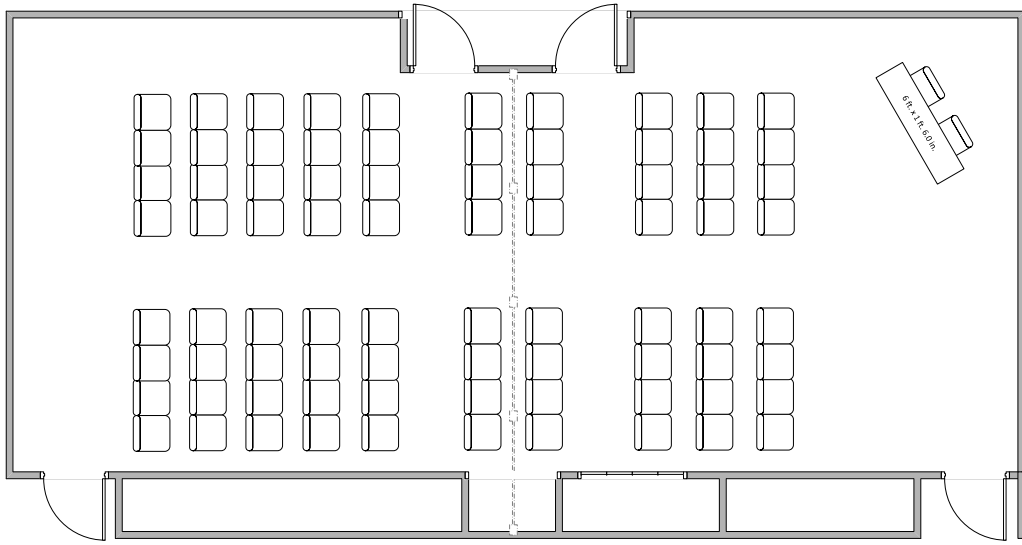
S/BK - 0:30/0:30

Hub Meeting Rooms 1-2



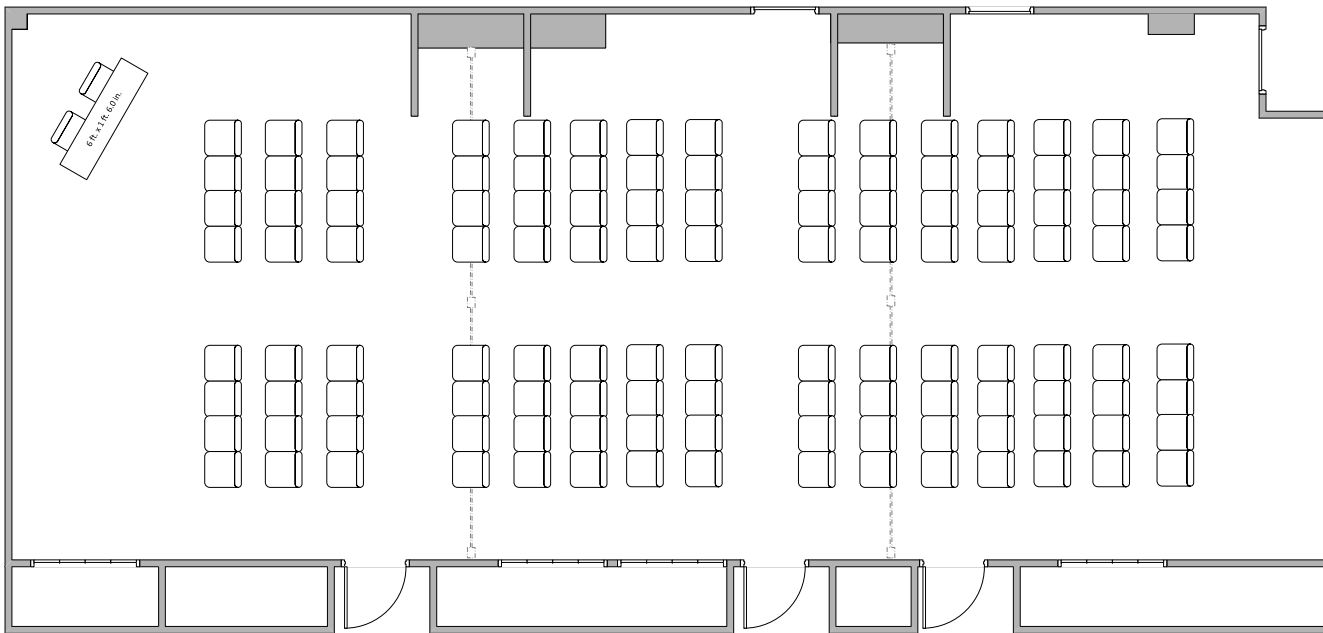
S/BK - 0:30/0:30

Hub Meeting Rooms 3-5



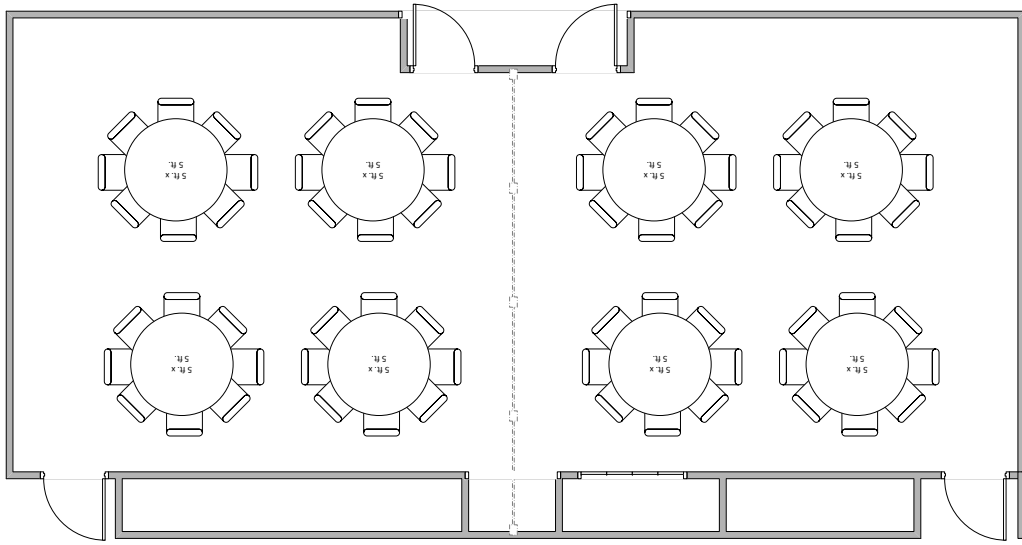
S/BK - 0:30/0:30

Hub Meeting Rooms 1-2



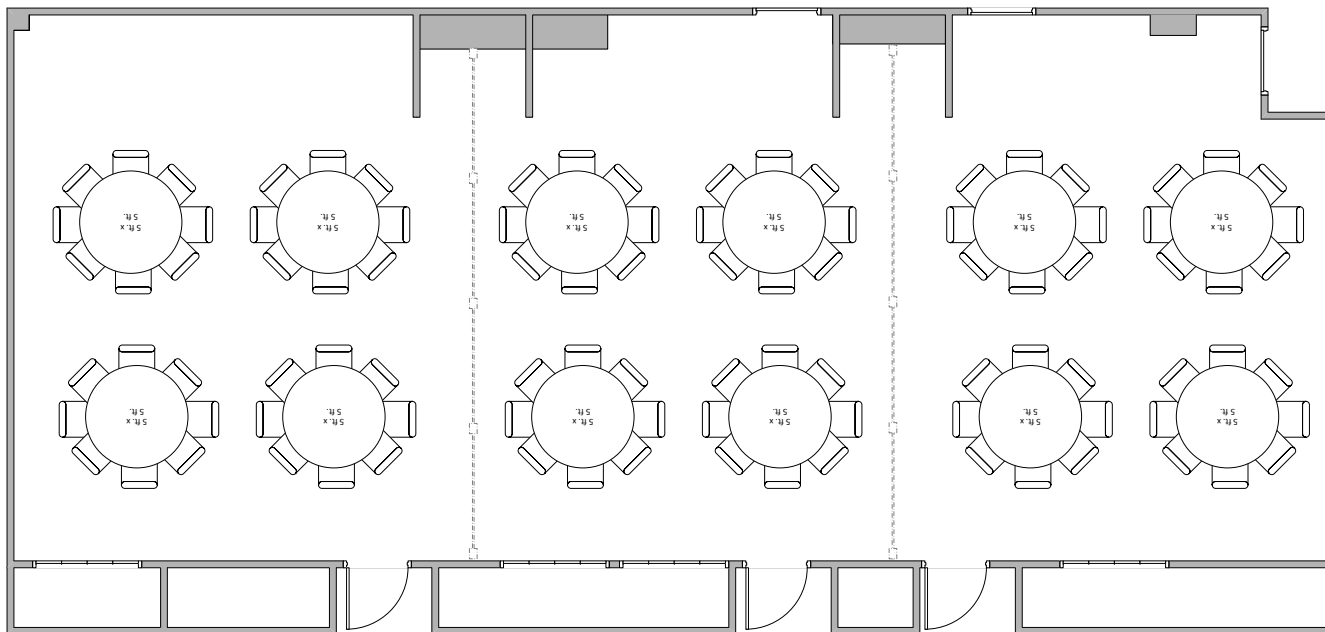
S/BK - 0:30/0:30

Hub Meeting Rooms 3-5



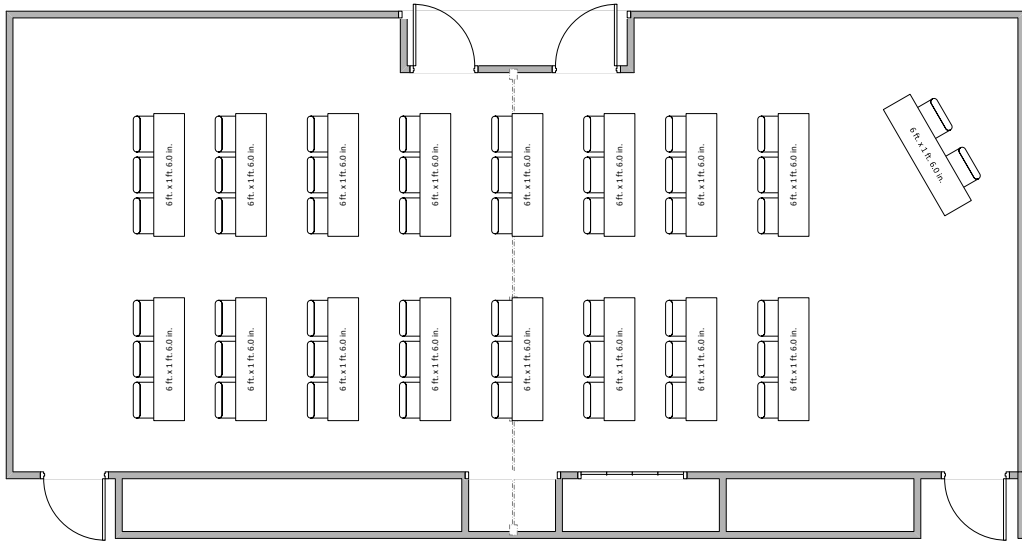
S/BK - 0:30/0:30

Hub Meeting Rooms 1-2



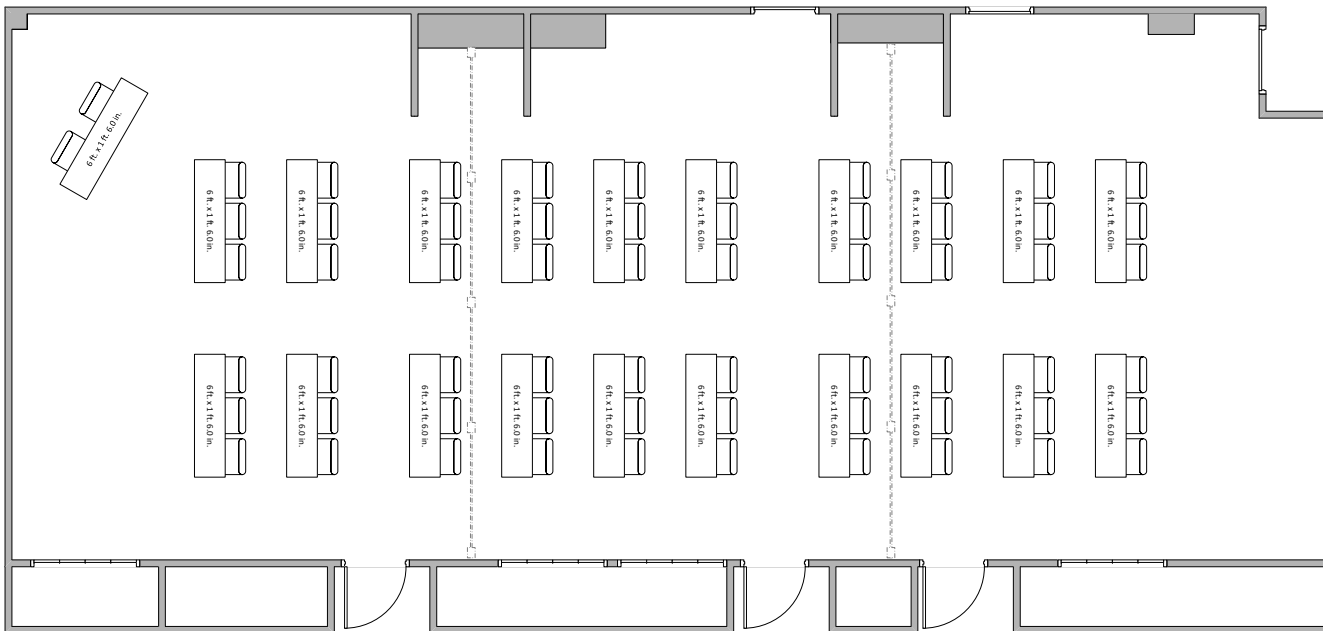
S/BK - 0:30/0:30

Hub Meeting Rooms 3-5



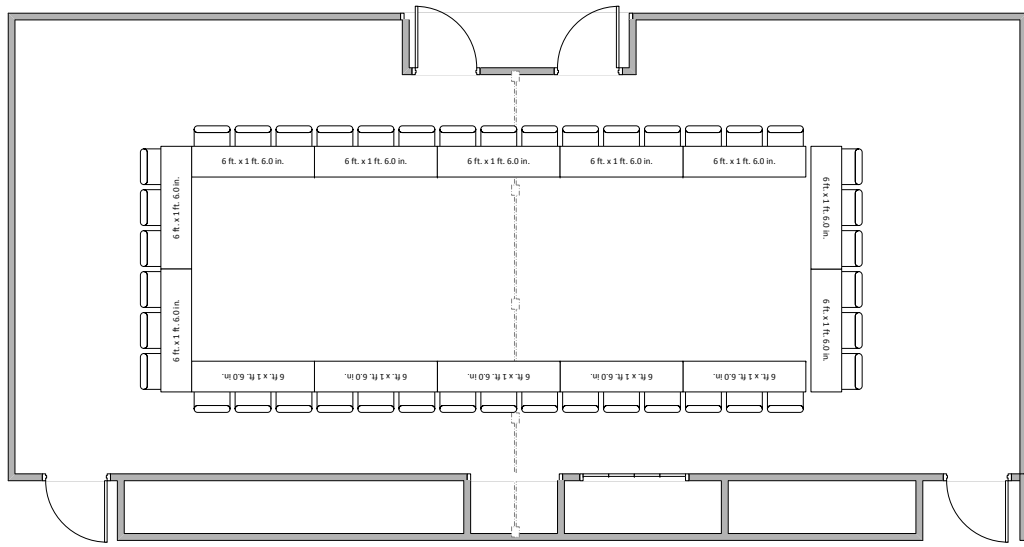
S/BK - 0:30/0:30

Hub Meeting Rooms 1-2



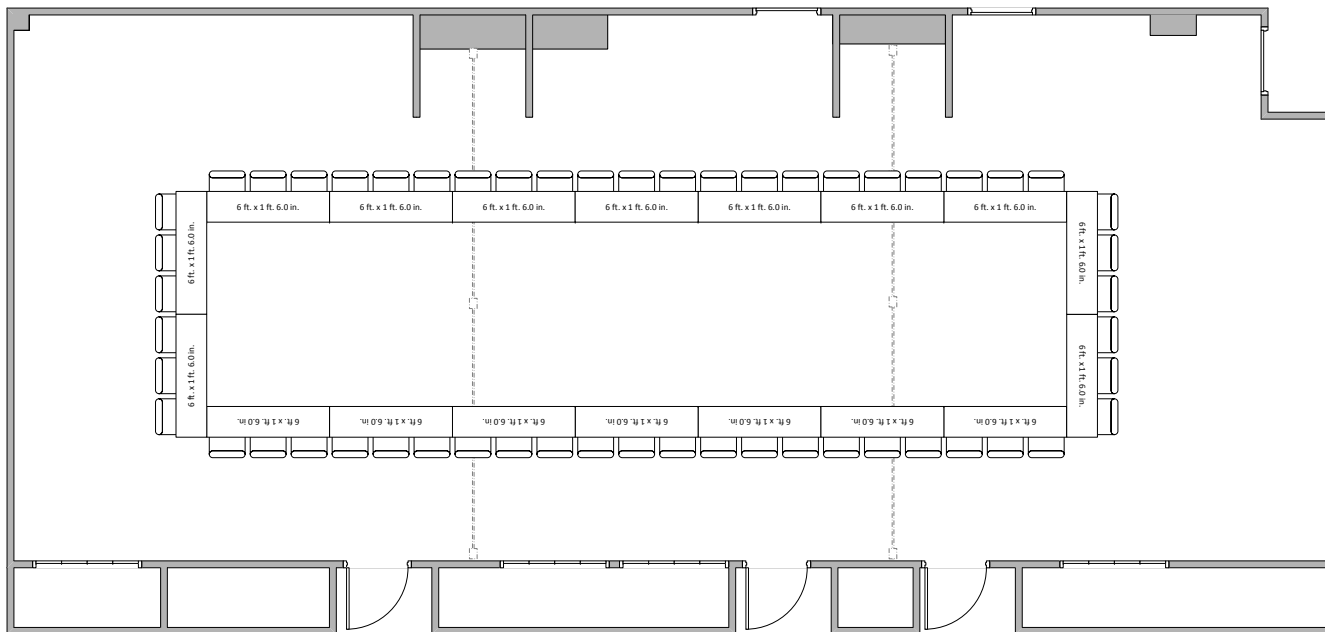
S/BK - 0:30/0:30

Hub Meeting Rooms 3-5



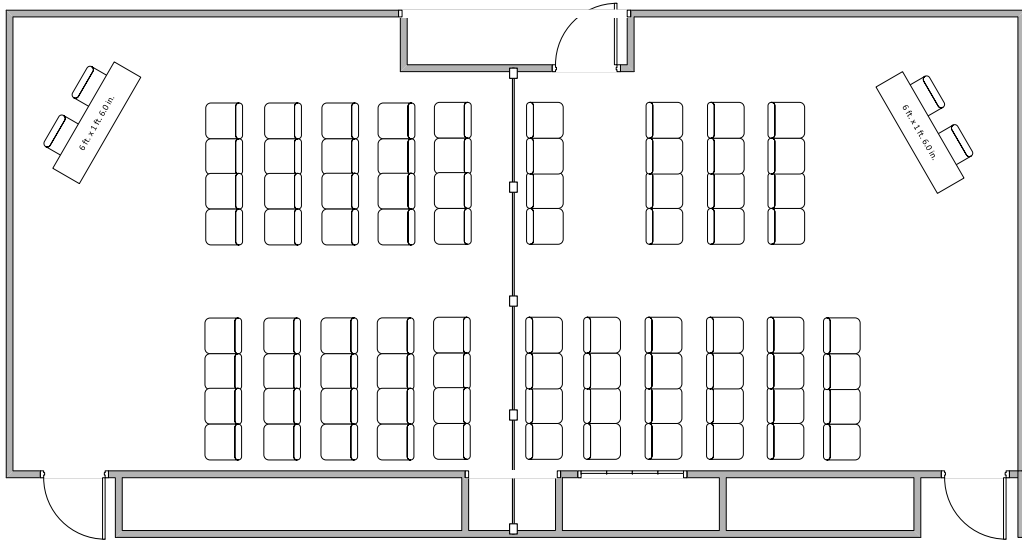
S/BK - 0:30/0:30

Hub Meeting Rooms 1-2



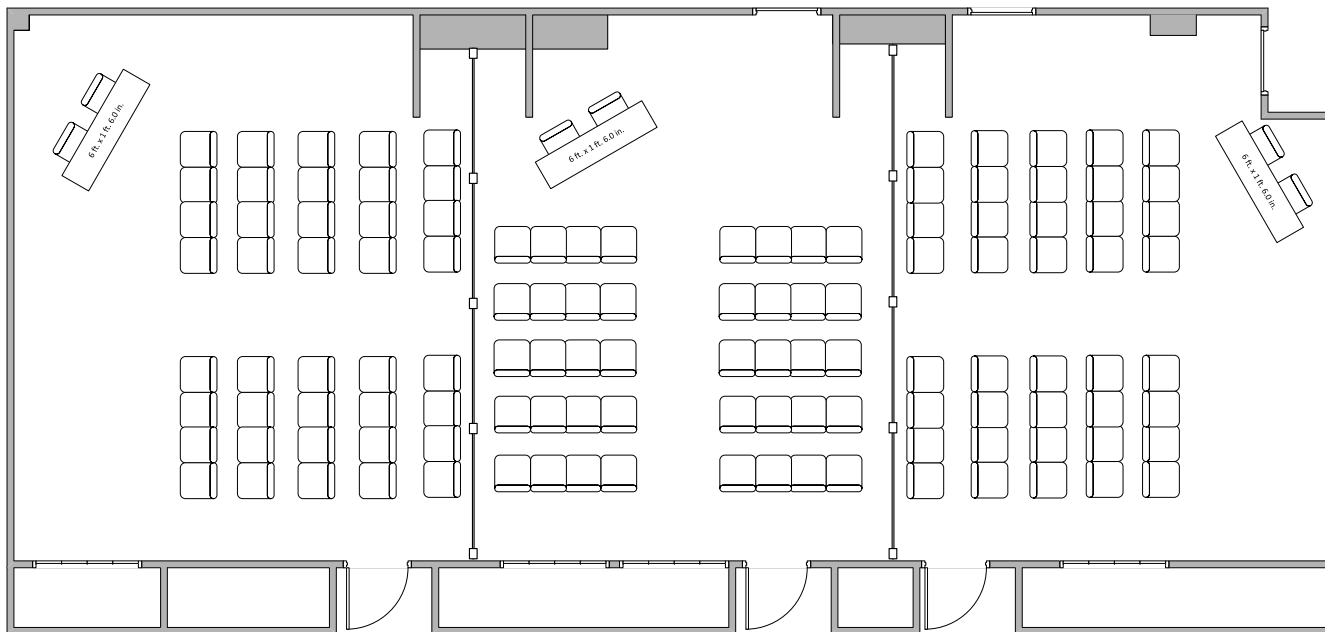
S/BK - 0:30/0:30

Hub Meeting Rooms 3-5



S/BK - 0:30/0:30

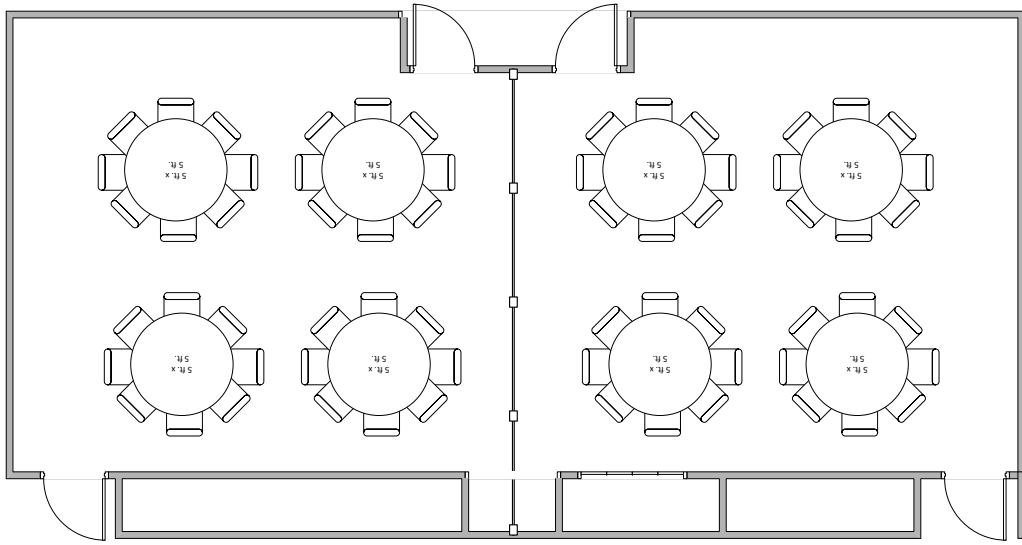
Hub Meeting Rooms 1,2



S/BK - 0:30/0:30

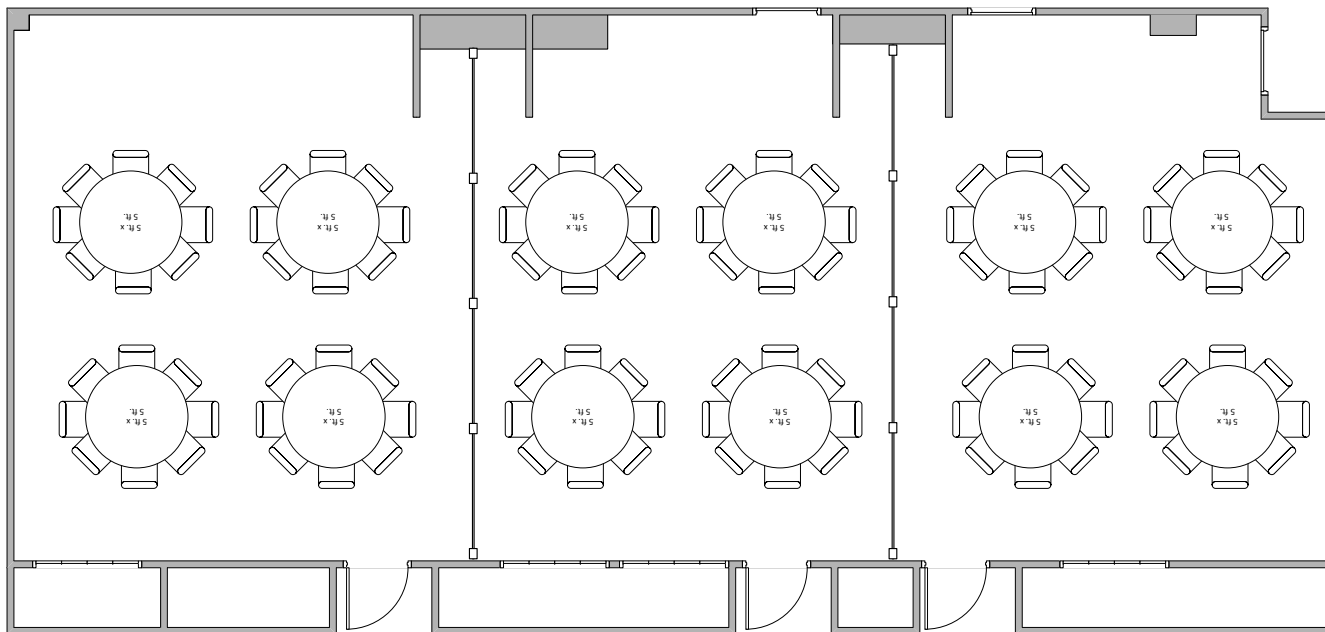
Hub Meeting Rooms 3,4,5





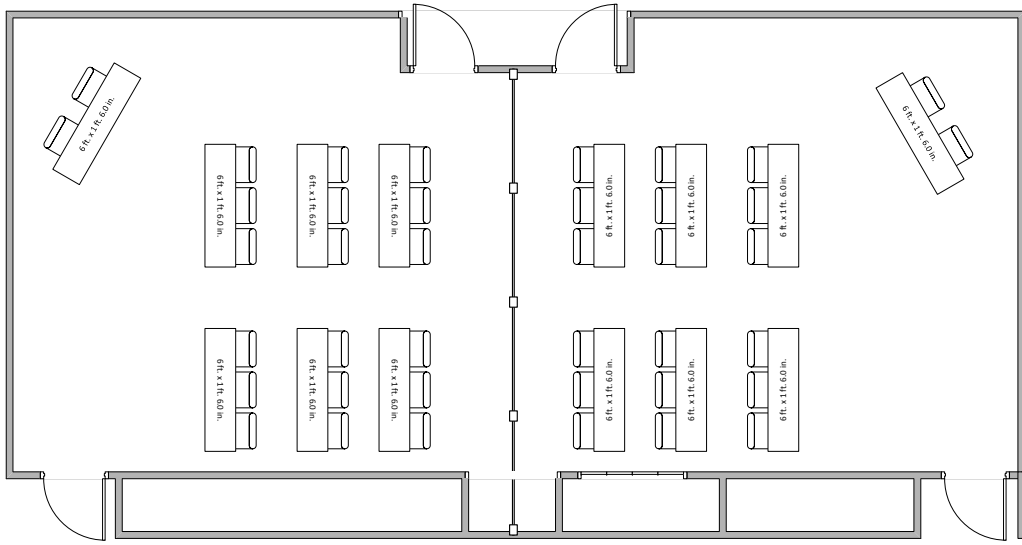
S/BK - 0:30/0:30

Hub Meeting Rooms 1,2



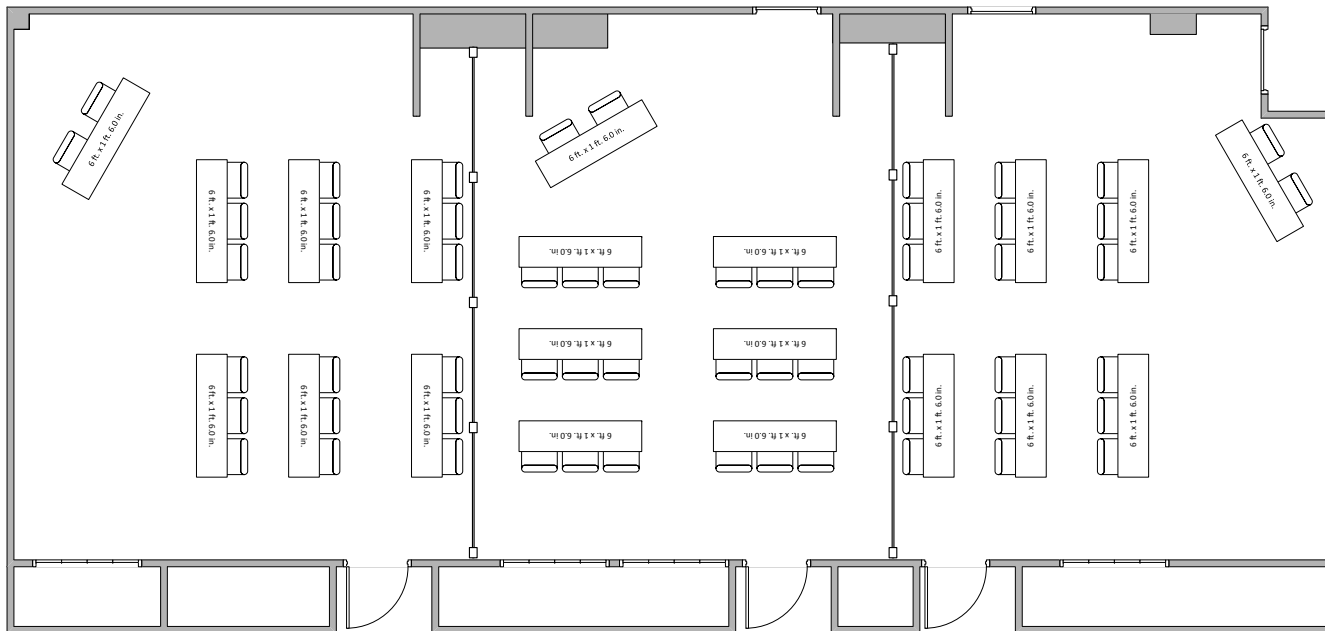
S/BK - 0:30/0:30

Hub Meeting Rooms 3,4,5



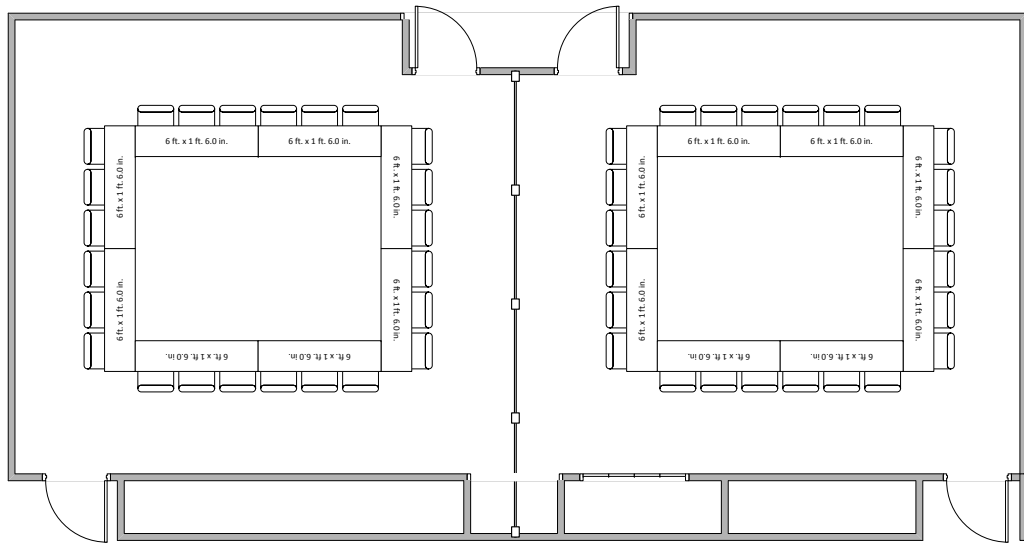
S/BK - 0:30/0:30

Hub Meeting Rooms 1,2



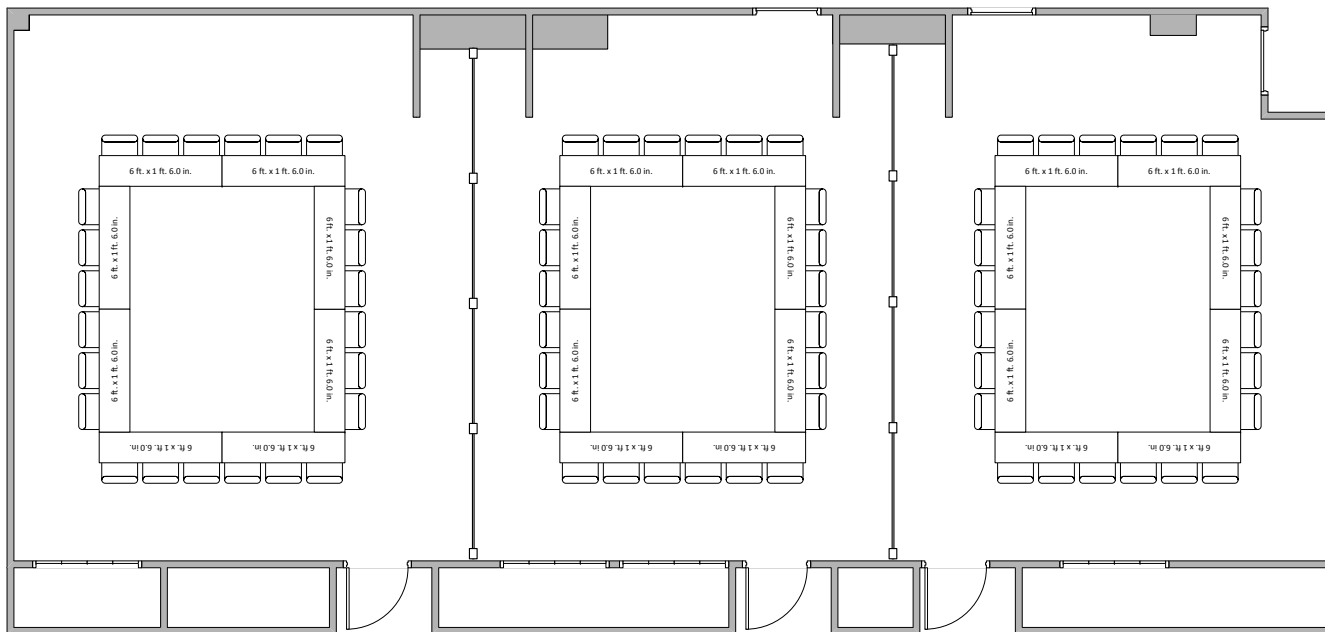
S/BK - 0:30/0:30

Hub Meeting Rooms 3,4,5



S/BK - 0:30/0:30

Hub Meeting Rooms 1,2



S/BK - 0:30/0:30

Hub Meeting Rooms 3,4,5

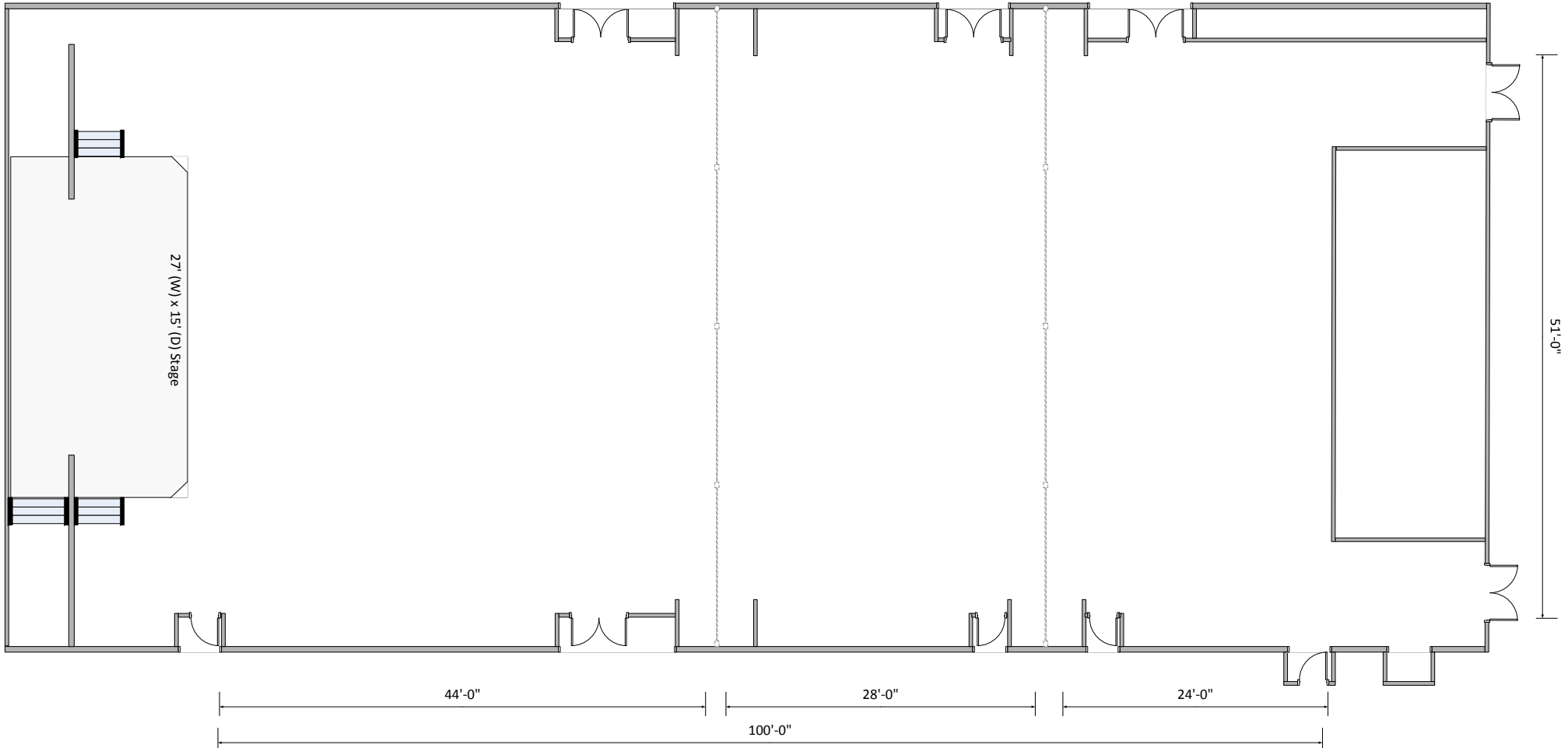
# The Hub

## Venue Templates

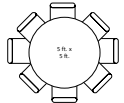
Front Ballroom

Mid Ballroom

Back Ballroom



5' Round



5' Round  
w/8 chairs



6'x3' table



6'x3' table  
w/2 chairs



Row of 9  
Chairs

Hub Ballroom Custom Template  
dimensions are approximate